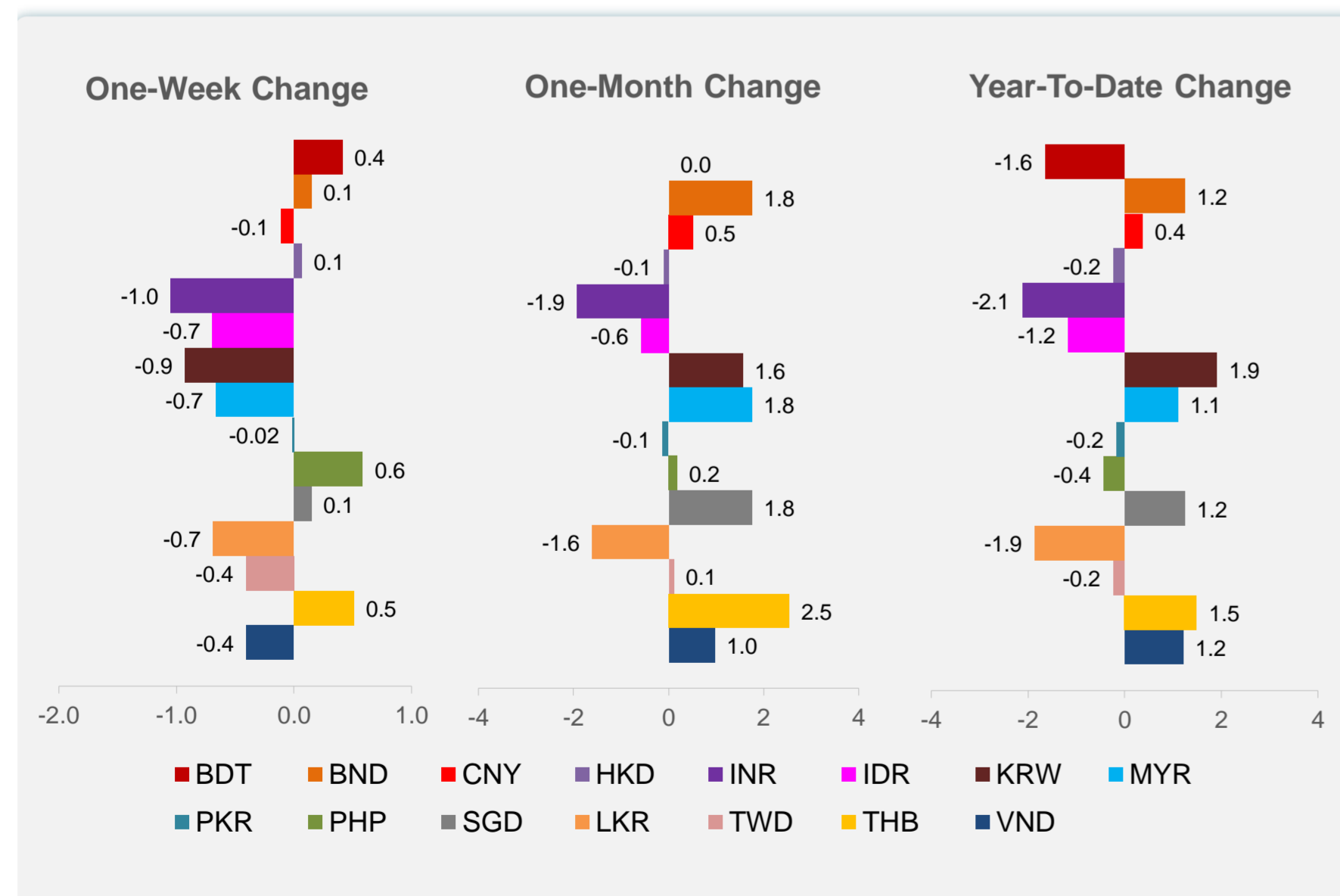
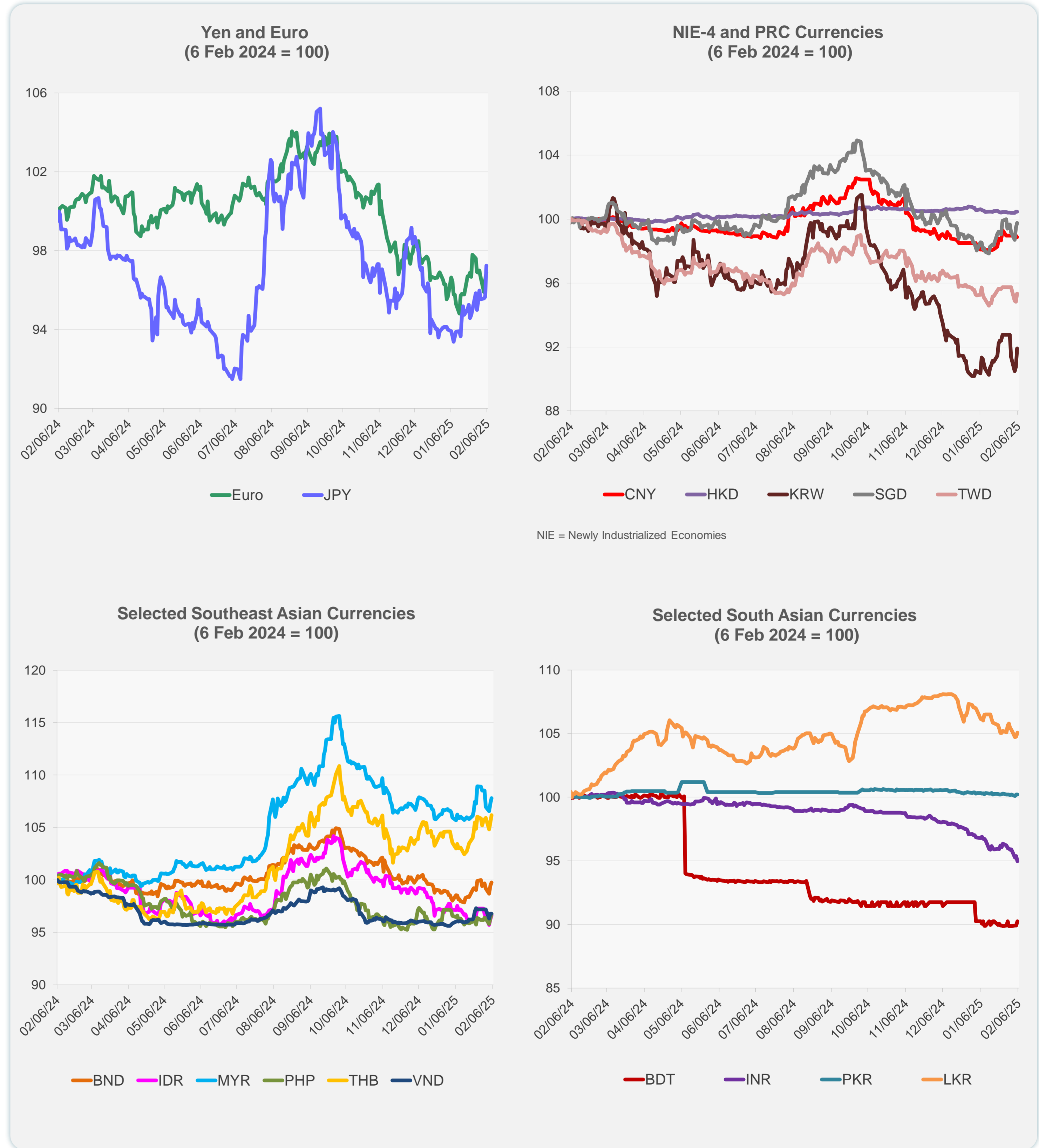
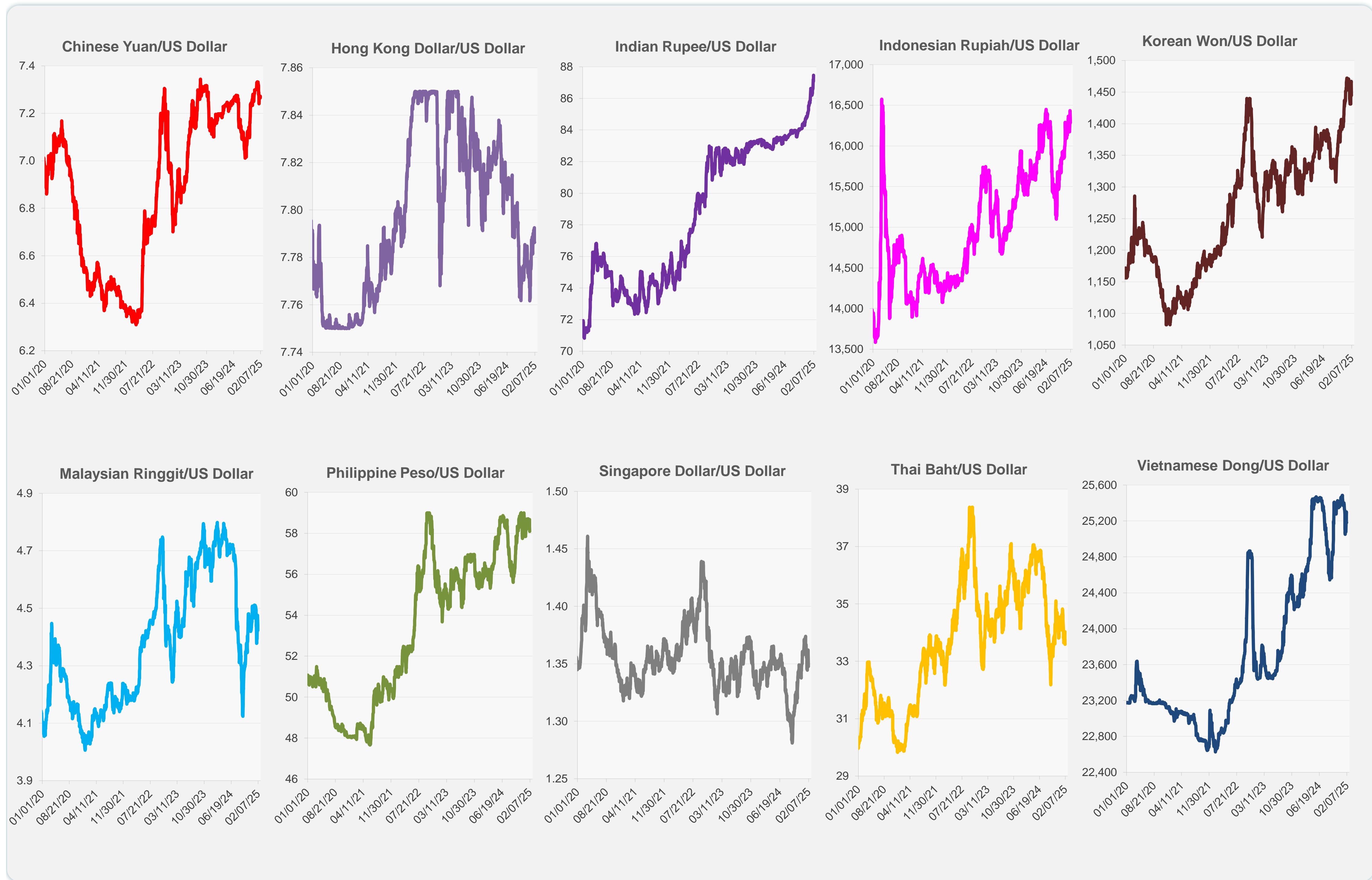


| | Latest Closing | % change from Previous Day | % change from 01-Jan-25 |
|------------------------------|----------------|----------------------------|-------------------------|
| Euro | 0.96 | 0.39 | 0.64 |
| Japanese yen (JPY) | 152.15 | 1.64 | 3.30 |
| Bangladeshi taka (BDT) | 121.50 | 0.37 | -1.65 |
| Brunei dollar (BND) | 1.35 | 0.30 | 1.24 |
| Chinese yuan (CNY) | 7.27 | -0.11 | 0.37 |
| Hong Kong dollar (HKD) | 7.79 | 0.00 | -0.24 |
| Indian rupee (INR) | 87.47 | -0.44 | -2.12 |
| Indonesian rupiah (IDR) | 16,285.00 | 0.37 | -1.17 |
| Korean won (KRW) | 1,444.60 | 1.27 | 1.91 |
| Malaysian ringgit (MYR) | 4.42 | 0.49 | 1.11 |
| Pakistan rupee (PKR) | 278.85 | -0.01 | -0.17 |
| Philippine peso (PHP) | 58.10 | 0.43 | -0.43 |
| Singapore dollar (SGD) | 1.35 | 0.30 | 1.24 |
| Sri Lanka rupee (LKR) | 298.55 | 0.29 | -1.86 |
| Taipei,China NT dollar (TWD) | 32.86 | 0.54 | -0.24 |
| Thai baht (THB) | 33.59 | 0.70 | 1.49 |
| Vietnamese dong (VND) | 25,180.00 | 0.00 | 1.21 |



Note: Negative/Decreasing values indicate depreciation of local currency, and positive/increasing values indicate appreciation.
Source: ADB calculations using data from Haver Analytics.

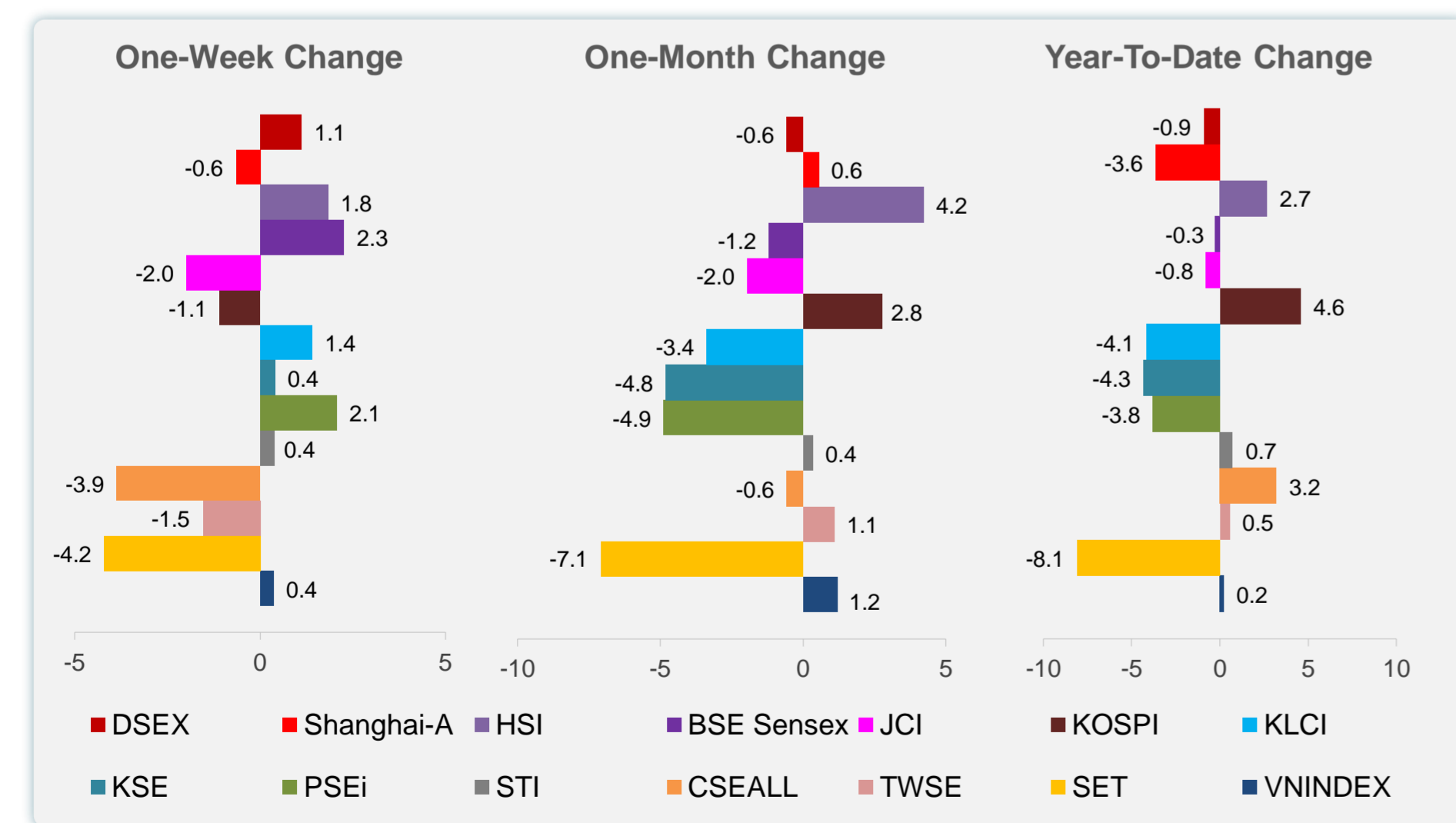
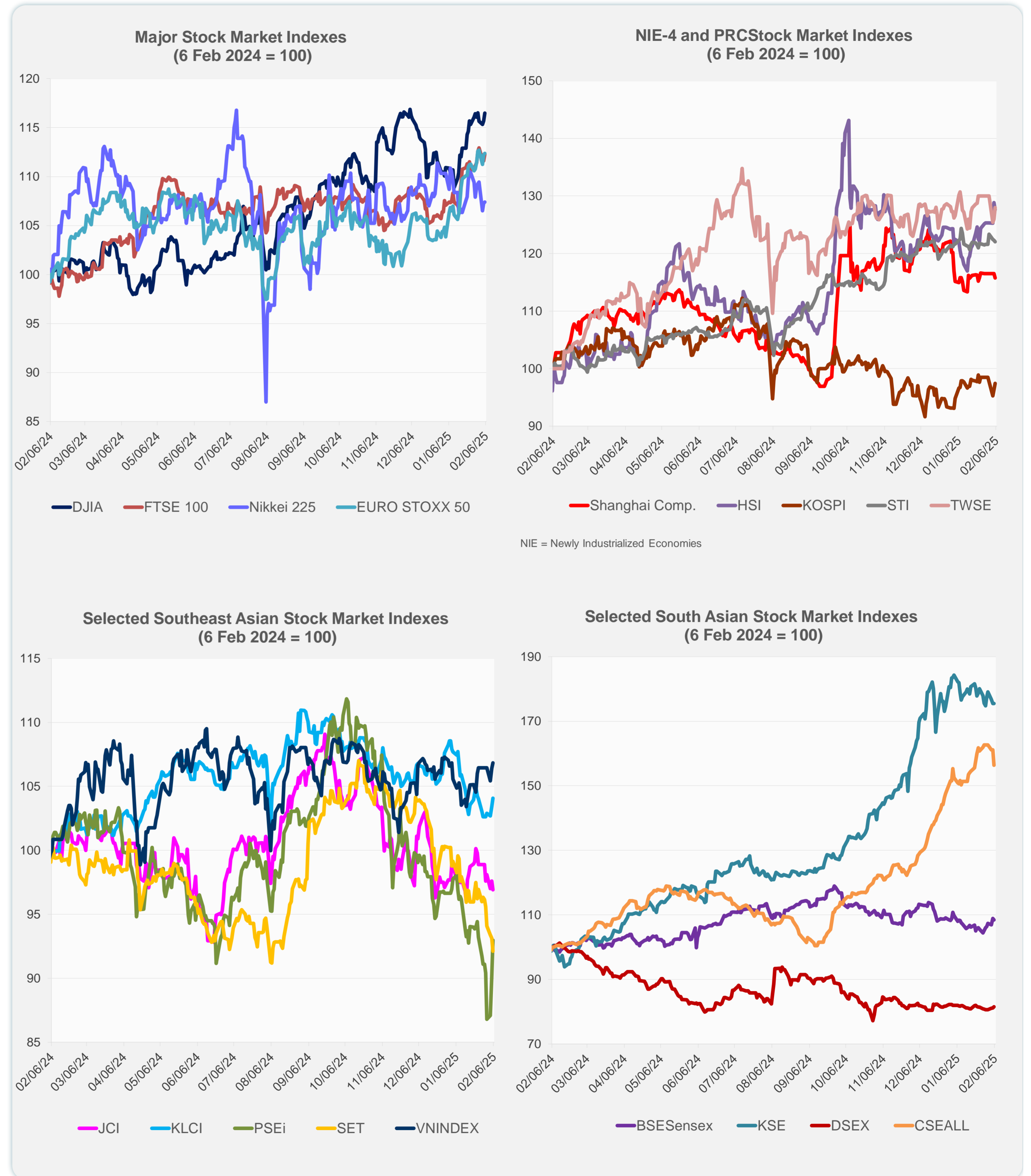


Source: Haver Analytics.

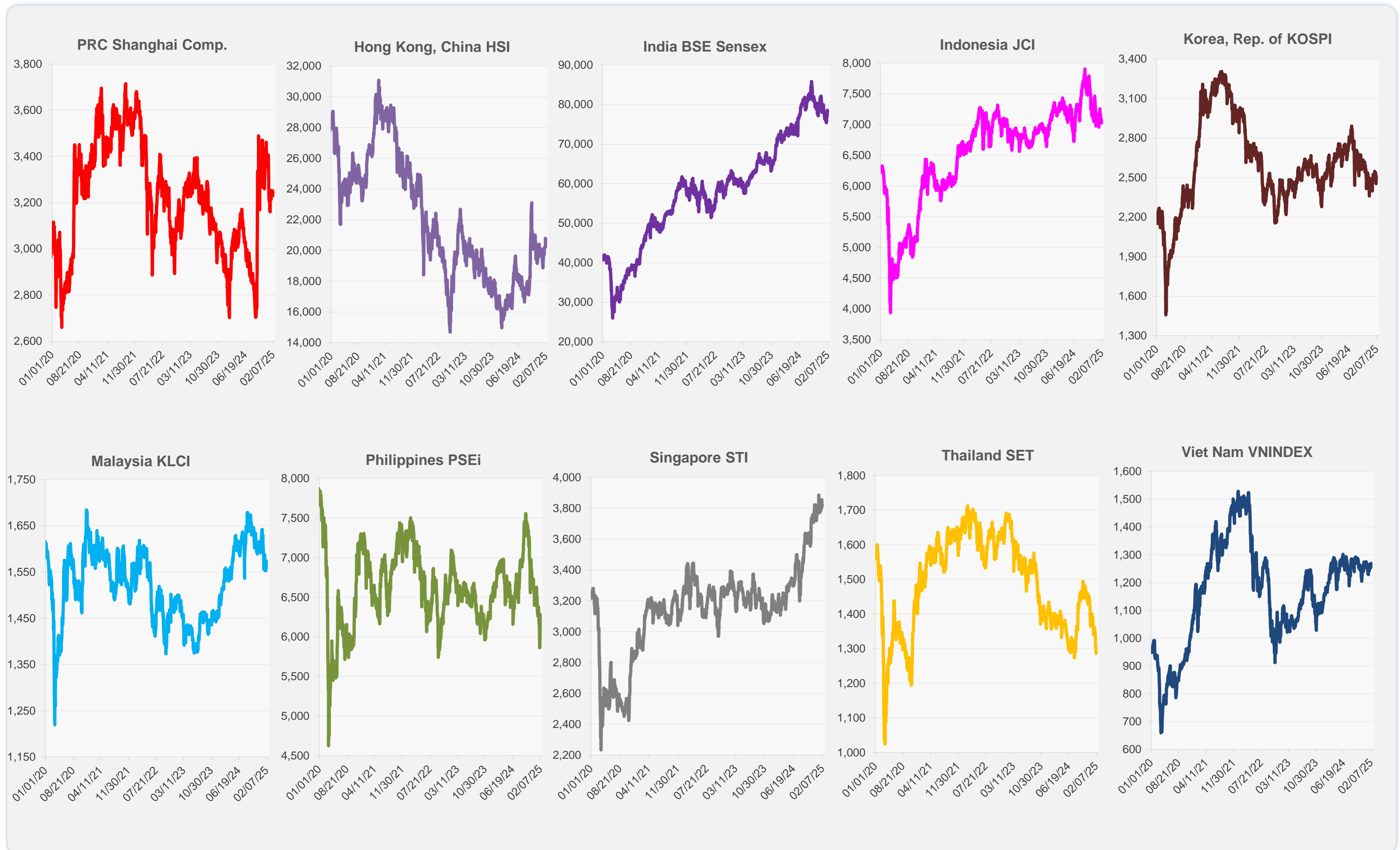
Daily Market Watch
STOCK INDEXES

6 February 2025, 9:00 AM Manila

| | Latest Closing | % change from Previous Day | % change from 01-Jan-25 |
|----------------------|----------------|----------------------------|-------------------------|
| US Dow Jones Ind Avg | 44,873.28 | 0.71 | 5.47 |
| US NASDAQ | 19,692.33 | 0.19 | 1.98 |
| US S&P 500 | 6,061.48 | 0.39 | 3.06 |
| UK FTSE 100 | 8,623.29 | 0.61 | 5.51 |
| EURO STOXX 50 | 5,271.12 | 0.12 | 7.66 |
| Japan NIKKEI 225 | 38,831.48 | 0.09 | -2.66 |
| Bangladesh DSEX | 5,170.06 | 0.44 | -0.92 |
| PRC Shanghai Comp. | 3,229.49 | -0.65 | -3.65 |
| Hong Kong, China HSI | 20,597.09 | -0.93 | 2.68 |
| India BSE Sensex | 78,271.28 | -0.40 | -0.30 |
| Indonesia JCI | 7,024.23 | -0.70 | -0.79 |
| Korea, Rep. of KOSPI | 2,509.27 | 1.11 | 4.58 |
| Malaysia KLCI | 1,574.51 | 0.64 | -4.13 |
| Pakistan KSE 100 | 111,935.38 | 0.00 | -4.34 |
| Philippines PSEi | 6,281.08 | 3.15 | -3.79 |
| Singapore STI | 3,815.37 | -0.20 | 0.73 |
| Sri Lanka CSEALL | 16,456.10 | -2.95 | 3.21 |
| Taipei, China TWSE | 23,161.58 | 1.61 | 0.55 |
| Thailand SET | 1,286.74 | -1.10 | -8.10 |
| Viet Nam VNINDEX | 1,269.61 | 0.39 | 0.22 |



Sources: ADB calculations using data from CEIC Data Company and Haver Analytics.



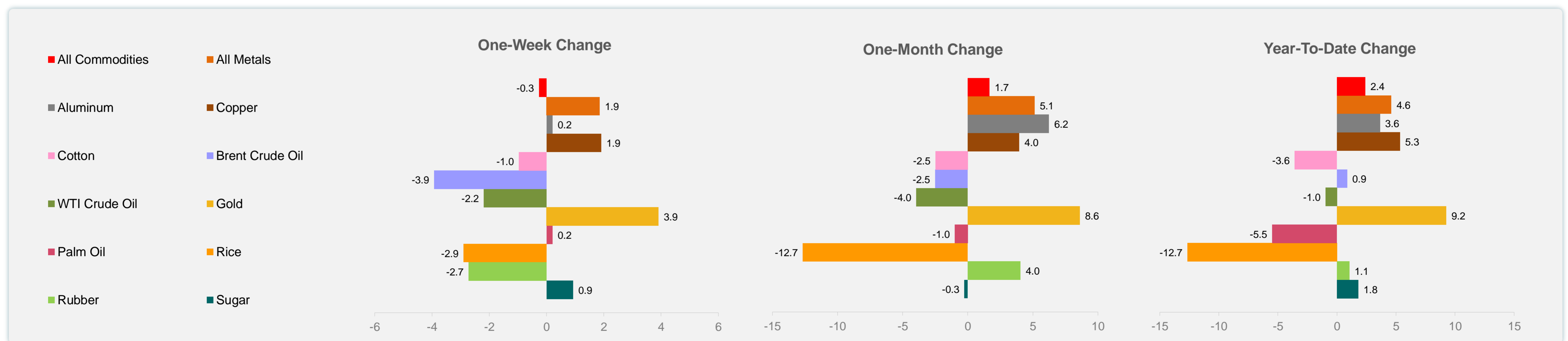
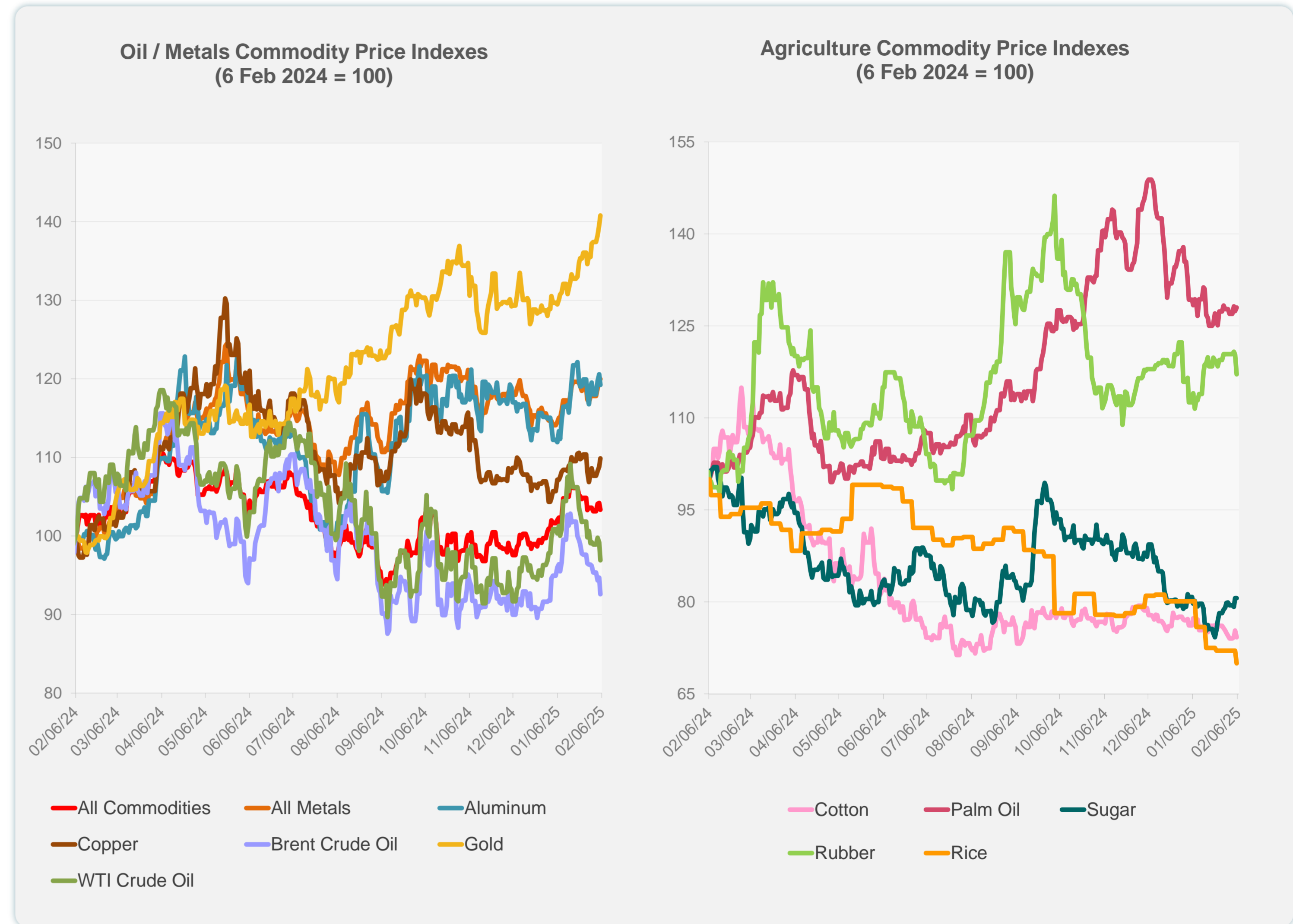
Sources: CEIC Data Company and Haver Analytics.

Daily Market Watch
COMMODITY PRICES

| | Unit | Latest Closing | % change from Previous Day | % change from 01-Jan-25 |
|---------------------|-------------------|----------------|----------------------------|-------------------------|
| S&P All Commodities | US\$ | 562.87 | -0.83 | 2.41 |
| S&P All Metals | US\$ | 321.52 | 0.34 | 4.60 |
| Aluminum | US\$/metric ton | 2,618.88 | -1.09 | 3.64 |
| Copper | US\$/metric ton | 9,114.51 | 1.00 | 5.34 |
| Cotton | US cents/lb | 63.54 | -1.40 | -3.58 |
| Brent Crude Oil | US\$/barrel | 74.75 | -2.20 | 0.86 |
| WTI Crude Oil | US\$/barrel | 71.03 | -2.30 | -0.96 |
| Gold | US\$/troy oz | 2,867.24 | 0.86 | 9.25 |
| Palm Oil | US\$/metric tonne | 1,039.79 | 0.47 | -5.48 |
| Rice ¹ | US\$/metric ton | 469.00 | -2.90 | -12.66 |
| Rubber ² | US\$/kg | 239.30 | -2.68 | 1.06 |
| Sugar | US cents/lb | 18.53 | 0.00 | 1.81 |

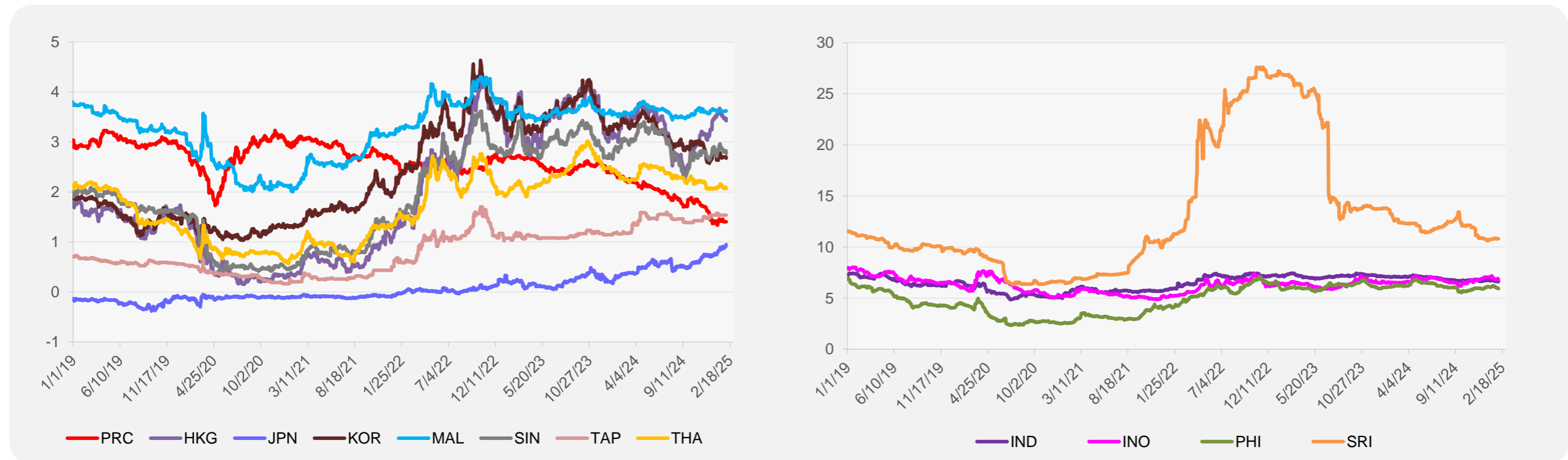
¹ Latest closing price from 22 January 2025.

² Singapore Exchange, Ribbed Smoked Sheet Rubber.

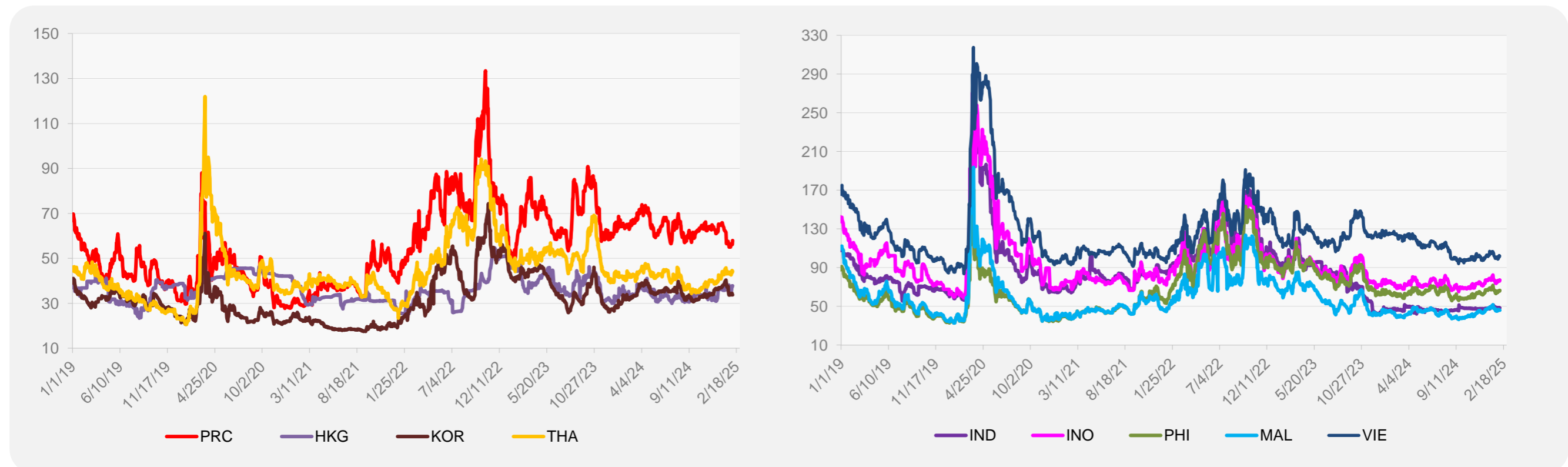


Source: ADB calculations using data from Bloomberg.

5-YEAR LOCAL CURRENCY GOVERNMENT BOND YIELDS (%)



5-YEAR CREDIT DEFAULT SWAP¹



¹ In USD and based on sovereign bonds.
Source: ADB calculations using data from Bloomberg.